

June Birthdays: Noriko Imai (6/11), Joshua Shigaki (6/14), Sayoko Thompson, Atsuko Cutcher (6/15), Naomi Inamura (6/23)

Announcements: We welcome Mrs. June Yoshinari into the family of God through the Sacrament of Holy Baptism. We pray God's richest blessings on her as she continues to grow in His grace.

This week's activities: **Monday**— Taiko Class at 1pm. **Thursday**—“Bible Reading Class” at 10:30am.

Care Connections Network—CCN members, if you have any questions, concerns, or if there are additional ways that CCN can be of service to you, please contact Fumi L. and Tami Day.

Handout from Retreat—If you wish to have a copy of handout that Pastor Matsushita used at our retreat, please contact Japanese Ministry's office. We have a few extra sets.

Japanese Ministry's Member's Meeting— It will be on Sunday, July 1st after our lunch. Please mark your calendar.

Prayers: Health: Ichiro & Esther Fujita, Michiko Jordan, Chizuko Miller, Kai & Yukiko Hoshi, Tamotsu Tanaka, Teruko Matsui, Teruko Yasumatsu, Toyomi Shigaki's mother, Noriko Imai's father, and Satoko Adachi's mother.

Travel: Hiroko Schwartz

LCR Japanese Ministry May Schedule

6/3	10am Joint Service/ Care Connections Network Kickoff Day		
6/4,11,18,25	Japanese Taiko Lesson	1:00PM	Bercaw Hall
6/7,14,21,28	Bible Reading Class	10:30AM	Joyce's Library
6/9	Japanese Ministry Retreat: 10am~3:30pm at Pacifica Synod's Office		
6/10,17,27	Christianity 101	10:00AM	Bercaw Hall
6/11	English Conversation Class	2:00PM	Joyce's Library
6/12,26	Irvine Bible Study	10:30AM	Aiko G's House
6/14	CCN "Caring for Caregivers"	11:30AM	Bercaw Hall
6/17	Baptism	11:30AM	
	Father's Day and June Birthday celebration lunch		
6/25	Line Dance Class	2:00PM	Bercaw Hall

LUTHERAN CHURCH OF THE RESURRECTION

Worship Services: Traditional Worship 8:30 a.m.
Praise Service 10:00 a.m.
Japanese Worship 11:30 a.m.

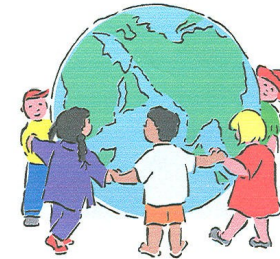
Senior Pastor: E. Carl Zimmermann
Japanese Ministry Pastor: Yutaka Kishino
Pastor and Assistant to the Bishop: Hitoshi Adachi
LCR Church Office: 714-962-5005
Japanese Ministry Office: 714-964-1912
Email: jministry@lcrhb.com

June 17, 2012 (Since November, 1988) No. 1215E

LUTHERAN CHURCH OF THE RESURRECTION JAPANESE MINISTRY

June 17, 2012

THIRD SUNDAY AFTER PENTECOST



週報

復活ルーテル

The Theme of 2012

**“He is good to everyone and
has compassion on all he made”**

PSALM 145:9

9812 Hamilton Avenue

Huntington Beach, CA 92646-8014

Japanese Ministry: (714) 964-1912

(jministry@lcrhb.org)

Church Office: (714) 962-5005, Fax:(714) 963-1275

Web Page: www.california.lcrhb.com

Pastor Yutaka Kishino: (714) 401-9457

Prelude (*seated*)

Greeting and Announcements

Opening Hymn (stand) “What a Friend We Have in Jesus” ELW No. 742
Japanese Hymn 21 No. 493

Blessing In the name of the Father, and of the Son, and of the Holy Spirit.
Amen.

Invocation Let us draw near with a true heart, and confess our sins unto God our Father, beseeching him, in the Name of our Lord Jesus Christ, to grant us forgiveness.

Confession O most merciful God,
We poor sinners confess to you, that we are by nature sinful and unclean, and that we have sinned against you by thought, word, and deed. Wherefore we flee for refuge to your infinite mercy, seeking and imploring your grace, for the sake of our Lord Jesus Christ.

Absolution Almighty God, in his mercy has given his Son to die for us, and for his sake, forgives us all our sins.
Amen.

Kyrie Lord, have mercy upon us.
Lord, have mercy upon us.
Christ, have mercy upon us.
Christ, have mercy upon us.
Lord, have mercy upon us.
Lord, have mercy upon us.

Hymn (seated) “Waga Shu Iesu ” Not in ELW
Japanese Hymn 21 No. 482

Prayer of The Day: O God, you are the tree of life, offering shelter to all the world. Graft us into yourself and nurture our growth, that we may bear your truth and love to those in need, through Jesus Christ our Savior and Lord. Amen.

First Lesson Ezekiel 17:22-24
Second Lesson 2 Corinthians 5: 6-10
Gospel (stand) Mark 4:26-34

Hymn “Love Divine, All Loves Excelling” Not in ELW
Japanese Hymn 21 No. 475

Today’s Message “What Is Our Faith?” Rev. Yutaka Kishino

The Apostles’ Creed (stand) **I believe in God, the Father Almighty, creator of heaven and earth. I believe in Jesus Christ, God’s only Son, our Lord, who was conceived by the Holy Spirit, born of the Virgin Mary, suffered under Pontius Pilate, was crucified, died, and was buried; he descended to the dead. On the third day he rose again; he ascended into heaven, he is seated at the right hand of the Father, and he will come to judge the living and the dead. I believe in the Holy Spirit, the holy catholic church, the communion of saints, the forgiveness of sins, the resurrection of the body, and the life everlasting. Amen.**

Sacrament of Baptism Japanese Hymn 21 No. 67 (1 & 2 verses)
Baptism for Mrs. June Yoshinari
Sponsors: Mrs. Yoko Monnica Ohuchi
Mrs. Candace Oshita
Japanese Hymn 21 No. 67 (3 & 4 verses)

Offering and Prayer

Prayers of the Church

Holy Communion

Communion Hymn Japanese Hymn 21 No. 79 (First verse only)

The Lord’s Prayer **Our Father, who art in heaven, hallowed be thy name thy kingdom come, thy will be done, on earth as it is in heaven. Give us this day our daily bread; and forgive us our trespasses, as we forgive those who trespass against us; and lead us not into temptation, but deliver us from evil. For thine is the kingdom, and the power, and the glory, forever and ever. Amen.**

Communion Hymn Japanese Hymn 21 No. 79 (Third verse only)

Benediction

Threefold Amen

Closing Hymn (stand) “God is the Refuge of His Saints” Not in ELW
Japanese Hymn 21 No.457